

Settings Manager for iStripper

v1.2 (2018.12.09)



Table of Contents

1. About the program	3
2. Installing	4
3. Uninstalling.....	7
4. Interface (GUI)	8
5. Export settings.....	10
5.1. Select the range of settings	10
5.2. Select the name for exported settings	11
5.3. Confirm operation	13
5.4. Provide description.....	14
5.5. Save as default.....	15
5.6. Done	16
6. Import settings	17
6.1. Select settings to import	17
6.2. Select the range of settings	18
6.3. Confirm operation	19
6.4. Save as default.....	20
6.5. Done	21
7. Selecting your own default settings	22
7.1. Select settings.....	22
7.2. Select the range of settings	23
7.3. Confirm operation	24
7.4. Done	25
8. Reset iStripper	26
9. Additional information	28
About.....	28
Changes	28
Disclaimer	28

1. About the program

Settings Manager is a batch file created to easily manage the set of iStripper settings. It allows you to easily save (export) iStripper settings in external files and to restore (import) them later. The script also allows you to choose your own default set of settings, which can be imported at any time using a special shortcut.

Thanks to the easy and quick export/import, you can quickly switch active scenes (Full screen tab) and music tracks (Music tab). This is especially important when you have a lot of scenes and music in your collection. The exported settings can be transferred between different copies of iStripper, between different computers, and between different users.

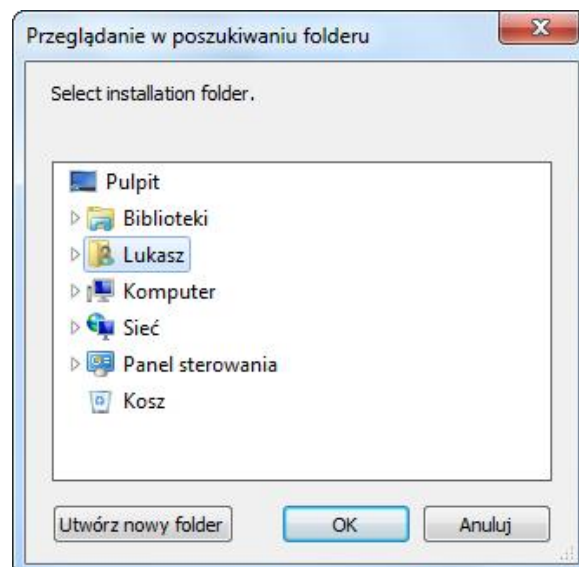
Settings Manager works on Windows systems. It has been tested with Windows XP SP3 (32-bit) and Windows 7 SP1 (64-bit), but should also work in newer versions of Windows. Settings Manager was tested with the iStripper 1.2.190.

2. Installing

1. Unzip the contents of the **settings_manager_for_is.zip** to any directory and run the **install.bat** file by double-clicking it. This is how the installer looks like:



2. In the first step of the installation process select the path to the directory in which you want to install Settings Manager. Press the **[1]** key on the keyboard and confirm with the **[Enter]** key. The folder selection window will be displayed:

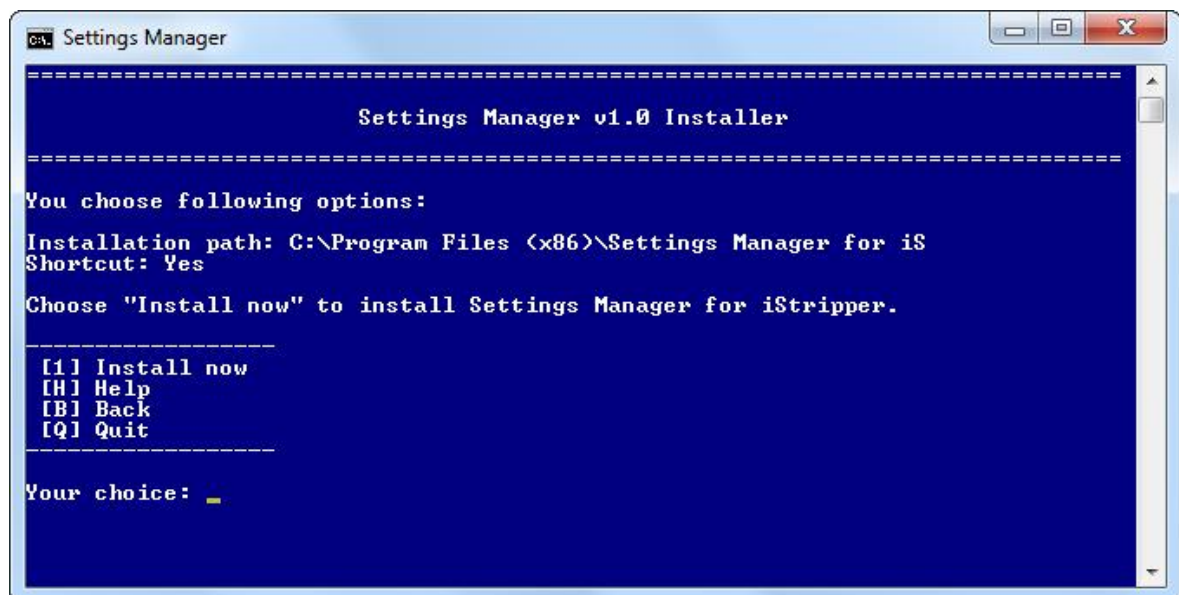


3. Select the directory in which you want to install Settings Manager and confirm your selection by clicking **OK** button. The selected directory will serve as the target path in which the installer creates a folder named **Settings Manager for iS**. It will contain the program's component files.

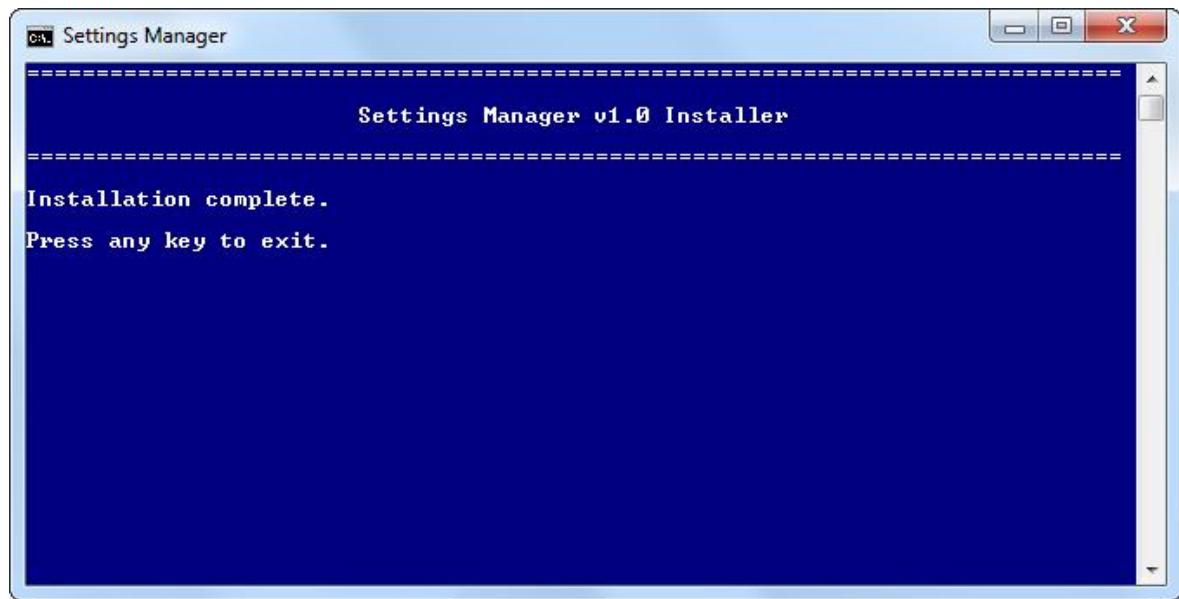
4. In the next step, the installer asks whether you want to create a shortcut to the Settings Manager. The shortcut will be placed on the desktop. Depending on the choice, press **[Y]** (Yes) on the keyboard or **[N]** (No) and confirm with the **[Enter]** key.



5. In the last step you will see a summary of the selected settings and a confirmation request. If you want to make any changes, select the **[B]** (Back) key. If you don't want to change anything, press the **[I]** (Install now) key and confirm with **[Enter]**. Copying of files starts. It usually takes a second or three.



6. The installer will notify you when the installation is complete with the message shown in the figure below. You can close the installer by pressing any key on the keyboard.

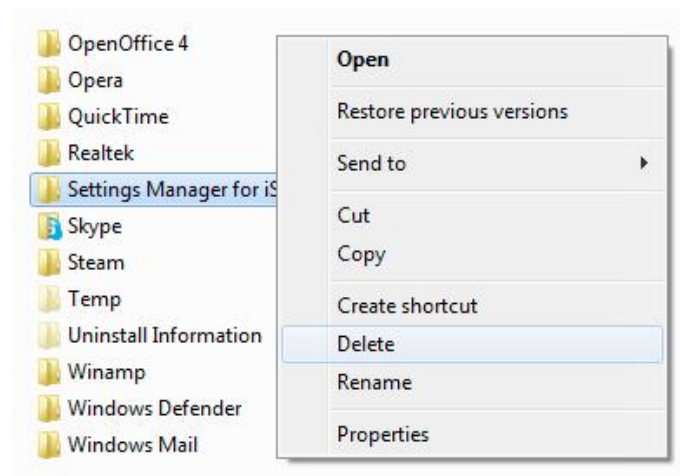


INFO: At every step of the installation, you can stop it by pressing the **[Q]** key and confirming it with the **[Enter]** key. Selecting the **[H]** key (accepted with Enter) will display a short help for the given installation stage. Selecting the **[B]** key (accepted with Enter) allows you to go back one step.

3. Uninstalling

Uninstalling Settings Manager comes down to removing all of its component files. During the installation, the program does not save any files in other directories than the one you selected during its installation. It also does not write any entries in the system registry.

To uninstall Settings Manager, go to the directory that contains the **Settings Manager for iS** folder, right-click on it and select **Delete**. You can also drag the **Settings Manager for iS** folder to the trash bin icon.



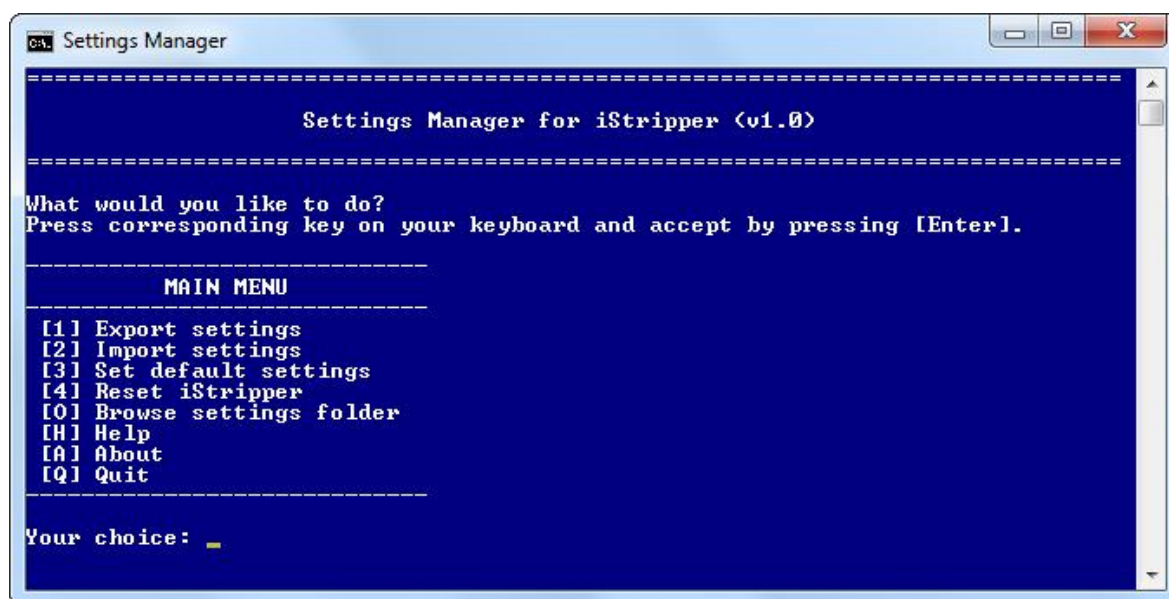
If you created a shortcut on the desktop during the installation, delete it in the same way as the **Settings Manager for iS** folder (by removing it to the trash bin).



4. Interface (GUI)

You can start the Settings Manager program by double-clicking the **manager.bat** file. It is located in the installation directory, in the **Settings Manager for iStripper** folder. If during the installation you have chosen to create a shortcut on the desktop, you can start the Settings Manager program using the shortcut.

After launching the program, a window will appear as in the figure below:



Settings Manager is a batch file, so it does not look very beautiful, but its main task was not to be beautiful. Its main task is to easily manage iStripper settings and it works pretty well in this matter.

Navigating in the menu consists of selecting the appropriate keys on the keyboard and confirming the selection with the **[Enter]** key. Each action has a separate key assigned. In the **Your choice** field, the currently selected key is displayed.

The following options are available in the main menu:

Export settings - starts the process of exporting settings. Select this option if you want to save the current iStripper settings.

Import settings - starts the process of importing settings. Select this option if you want to restore previously saved iStripper settings.

Set default settings - saves the selected settings as default and creates on the desktop a special shortcut to the iStripper program.

Reset iStripper - restores the iStripper settings to the factory default.

Browse settings folder - opens the explorer window in which the exported settings are saved.

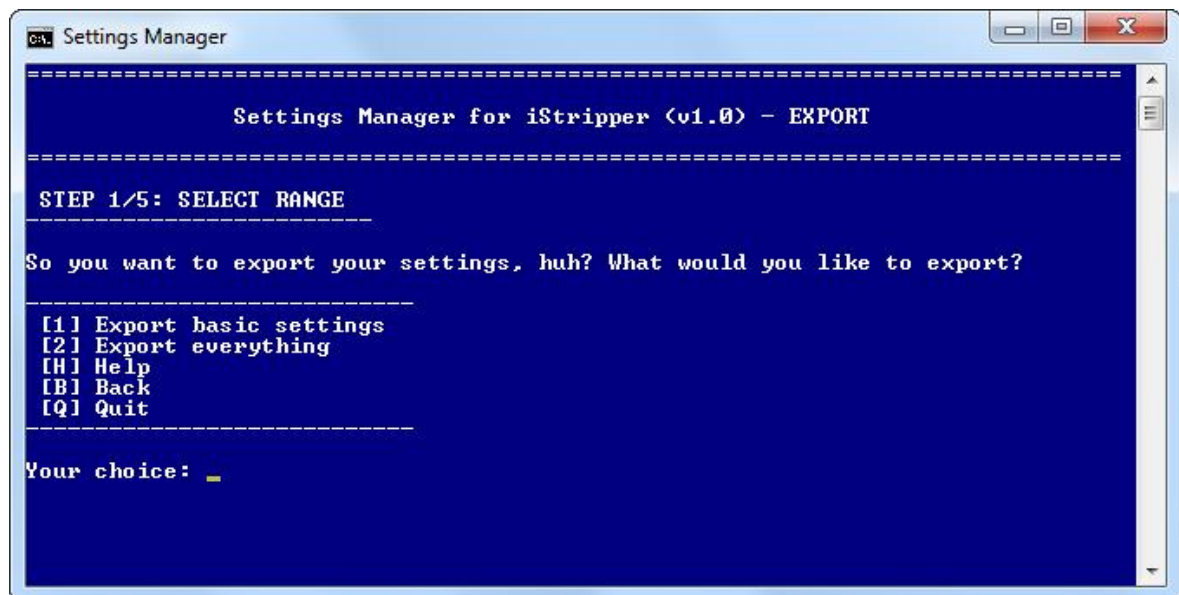
Help - displays short help about the Settings Manager program.

About - displays short information about the program and its author.

Quit - closes the Settings Manager program.

The program guides you through the export and import process, displaying short instructions at the top of the window. In some situations an additional, slightly broader description is available. To display it, select the **[H]** (Help) key.

In most cases, the user can go back one step in the export/import process. An additional option **[B]** (Back) appears in the menu.



In some situations, going back one step is impossible, especially where the user is asked to enter a file name or a description using the keyboard. This is due to the need to use the keyboard for other purposes than navigation. The use of the navigation keys would not work in such situations.

5. Export settings

Export of iStripper settings takes place in five steps:

- Selection of the range of settings to be exported
- Selection of the name for the exported settings
- Confirmation of the operation
- Selection of description for exported settings (optional)
- Save exported settings as default (optional)

All sets of exported settings are saved in a common folder named **settings**. You can find it in the installation folder of the Settings Manager program. Each exported set of settings is saved in a separate subfolder whose name is selected by the user in the export process.

Most iStripper settings are stored in the Windows registry. Exporting settings consists in extracting only those keys and values that are responsible for the iStripper settings. Other keys and values (including user-related identifiers) are not read. The exported settings are saved to a file with the **.reg** extension.

If the user has a list of music tracks, it can also be exported. In this case, this is done by copying the **.mpl** file.

To start exporting iStripper settings, select the first option in the main menu:

```
[1] Export settings
```

Press **[1]** on the keyboard and confirm with **[Enter]**.

5.1. Select the range of settings

In the first step, the program will ask you to choose the range of settings to export. You can choose one of two ranges: **basic settings** and **all settings** (everything).

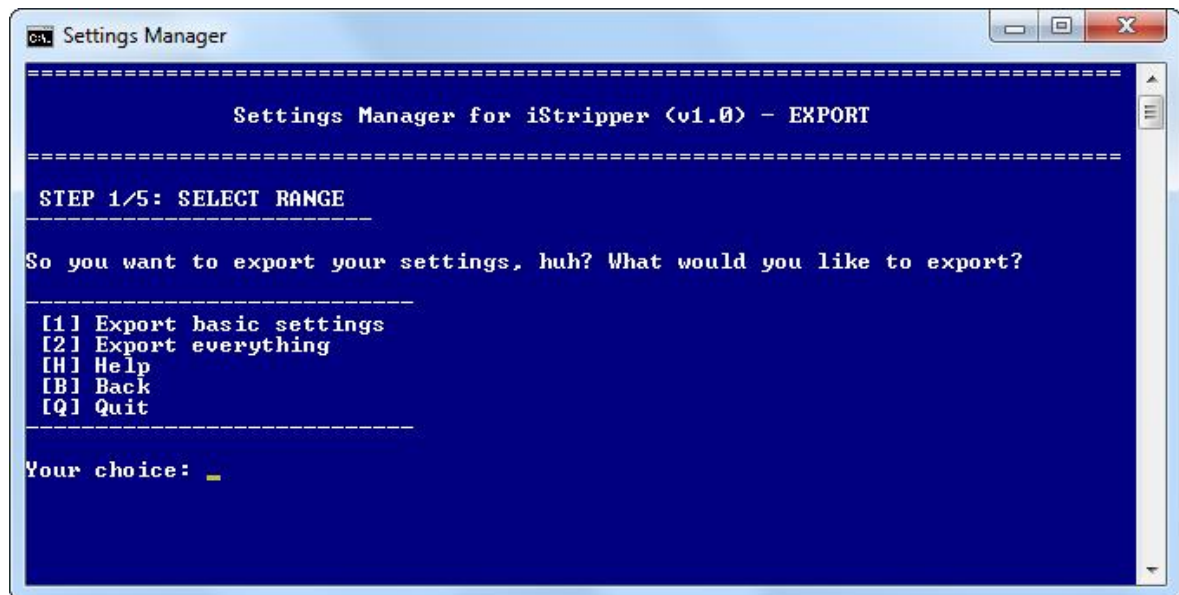
The **basic settings** include the settings available in the **Settings** tab (gear icon in the upper right corner of the iStripper window). It does not matter if the **Advanced Settings** option is enabled or not. All options available in this tab, even those hidden, will be exported.

All settings (everything) in addition to the basic settings also include:

- settings available in the **Girls Store** tab - view, sort and filter settings,
- settings available in the **My collection** tab - view, sort and filter settings,

- the state of activation/deactivation switch of the iStripper program,
- the state of the **Master sound** switch,
- settings in the **Music** tab - view settings, active songs,
- settings in the **Full screen** tab - view settings, active scenes,
- resolution of bonus videos,
- settings responsible for managing the amount of disk space for demo files.

Select the range of settings you want to export by pressing the **[1]** key (Export basic settings) or **[2]** (Export everything), then accept with the **[Enter]** key.



The program will go to the next step.

5.2. Select the name for exported settings

Each set of settings is saved in a separate directory. The user can choose the name of the directory, which is also the name of the exported set of settings. The exported set of settings will be identified by this name.

When providing the name, remember to use only letters (small and big) and numbers if possible. The range of special characters is very limited. Some special characters can not be used in file and directory names, as they may work incorrectly in other applications. In addition, the use of some special characters may cause Settings Manager to stop working. The following is a list of acceptable and unacceptable special characters.

Acceptable special characters:

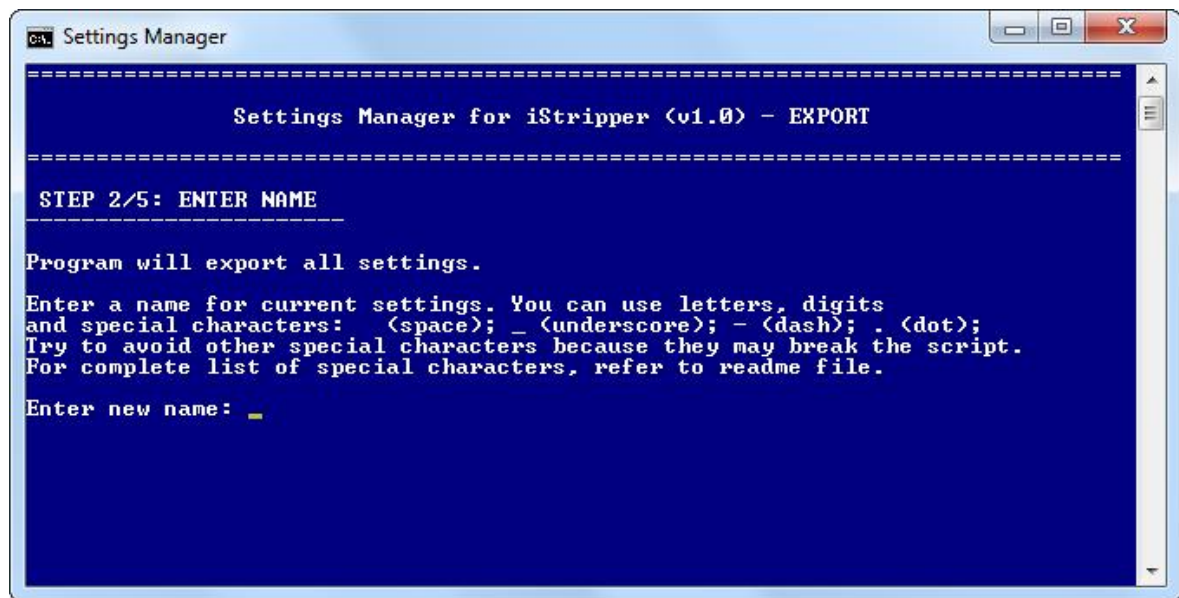
Char	Name	Char	Name
	space	`	grave
-	dash	@	at
_	underscore	#	hash
;	semicolon	\$	dollar sign
.	dot (only in combination with other letters, numbers and characters; never as a single character)	+	plus
		=	equal sign
,	coma	()	round brackets (left and right)
'	apostrophe	[]	square brackets (left and right)
~	tilde	{}	curly brackets (left and right)

Characters that must not be used due to Windows limitations:

Char	Name	Char	Name
/	slash	?	question mark
\	backslash	"	quotation mark
:	colon		pipe
*	asterisk	<>	less than/greater than

Characters that must not be used due to the limitations of the Settings Manager program:

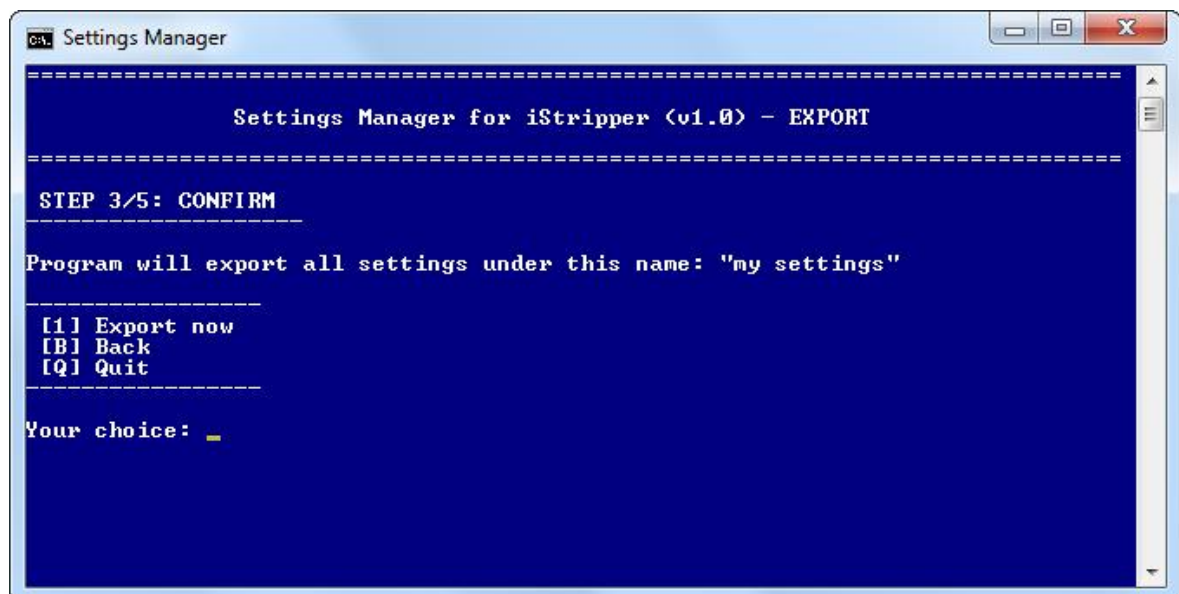
Char	Name	Char	Name
!	exclamation mark	^	caret
%	percent	&	ampersand



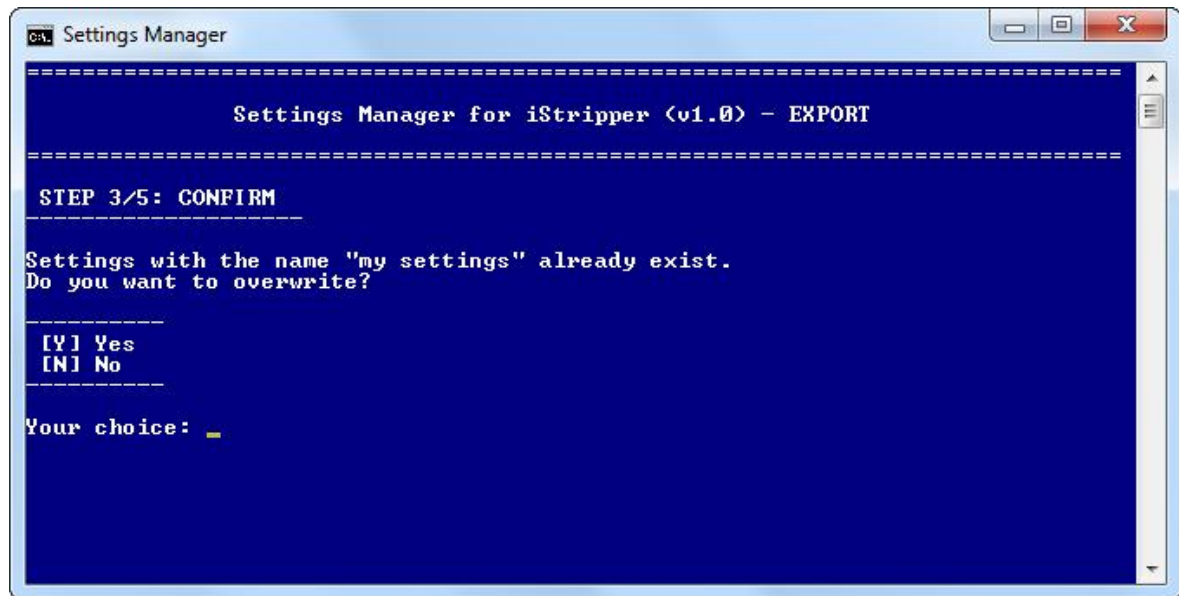
After entering the name, confirm it with the **[Enter]** key. You will go to the next step.

5.3. Confirm operation

The program will display a summary showing the selected range of settings and their name. You can still change these options by going back with the **[B]** key. If you don't want to change anything, accept your choice. Select **[1]** (Export now) and press **[Enter]**.



If the program detects that there is already a set of settings with the name you choose, it will inform you and ask you if you want to overwrite the existing set:



Select **[Y]** (Yes) to overwrite existing settings, or **[N]** (No) to select a different name. Confirm the selection with the **[Enter]** key.

After confirming the export operation, the saving of the selected range of settings will start. They will be saved in files with the **.reg** and **.mpl** extension in the following directory:

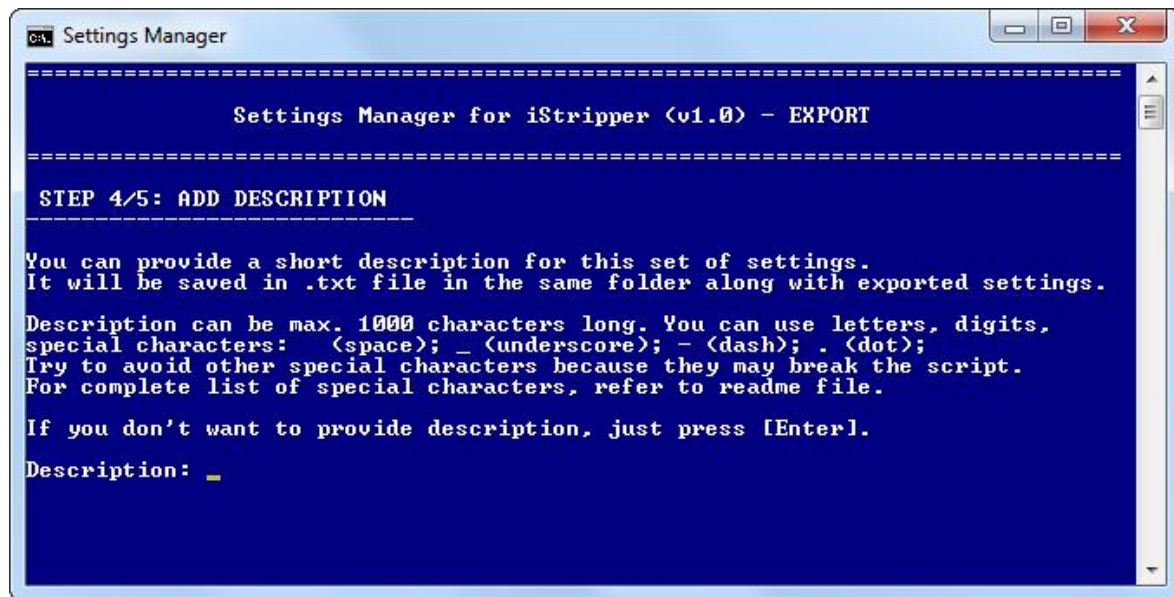
X:/install_path/Settings Manager for iS/settings/settings_name

where **X** is the drive letter, **install_path** is the path to the folder where Settings Manager is installed, and **settings_name** is the name you chose for the exported settings.

After the export is completed, the program will go to the next step.

5.4. Provide description

In this step, the program will ask for a description of the exported settings. The description can be useful for easier identification of a set of settings, which can be especially important when you have many exported sets. The description is saved in the **.txt** file along with the settings (in the same folder).



The same restrictions apply to special characters as for the name of the settings (described in section 5.2. Select the name for exported settings). Additionally, please remember that the description should not exceed 1000 characters. This is a restriction resulting from the technology in which Settings Manager was created. In general, the best description is a short description (in one sentence).

If you don't want to provide description, simply press **[Enter]**. Settings Manager will go to the last step.

INFO: You don't need to enter the creation date in the description. The date and time is automatically saved by the program.

5.5. Save as default

Settings Manager can save the exported settings as default settings for iStripper. In this process, a special shortcut to the iStripper program is created on the desktop. With its help you will launch the iStripper program with the default settings loaded - your default settings. If you have a standard shortcut to iStripper on your desktop, don't be afraid - it will be intact.

If you want to use the exported settings as default in the future, select **[Y]** (Yes), otherwise select **[N]** (No). Confirm the selection with the **[Enter]** key.

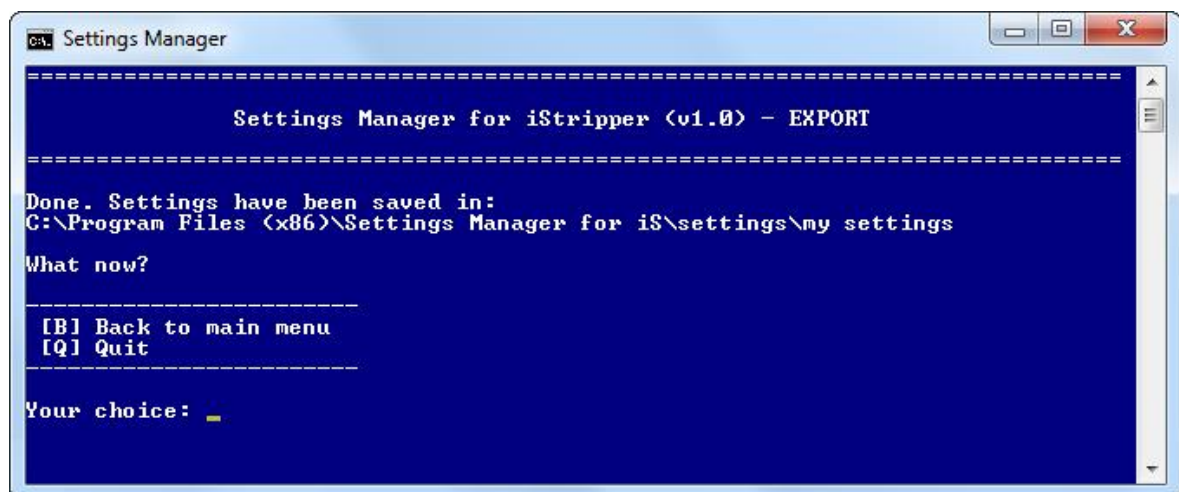
If you are not sure whether you want to use these settings as default, just select **[N]** (No). The default settings can be selected later, using the appropriate option in the Settings Manager main menu (its description can be found in the further part of the manual).



WARNING: Remember that launching iStripper with a special shortcut will overwrite its current settings. Before you use a special shortcut, consider exporting the current iStripper settings.

5.6. Done

The export process has been completed. You'll see a message with the path to the directory where you can find your settings.



Return to the main menu by pressing the **[B]** (Back) key or close manager by pressing the **[Q]** (Quit) key. As always, confirm the selection with the **[Enter]** key.

6. Import settings

The iStripper settings are imported in four steps:

- Selection of saved settings for import
- Selection of the range of settings to import
- Confirmation of the operation
- Save imported settings as default (optional)

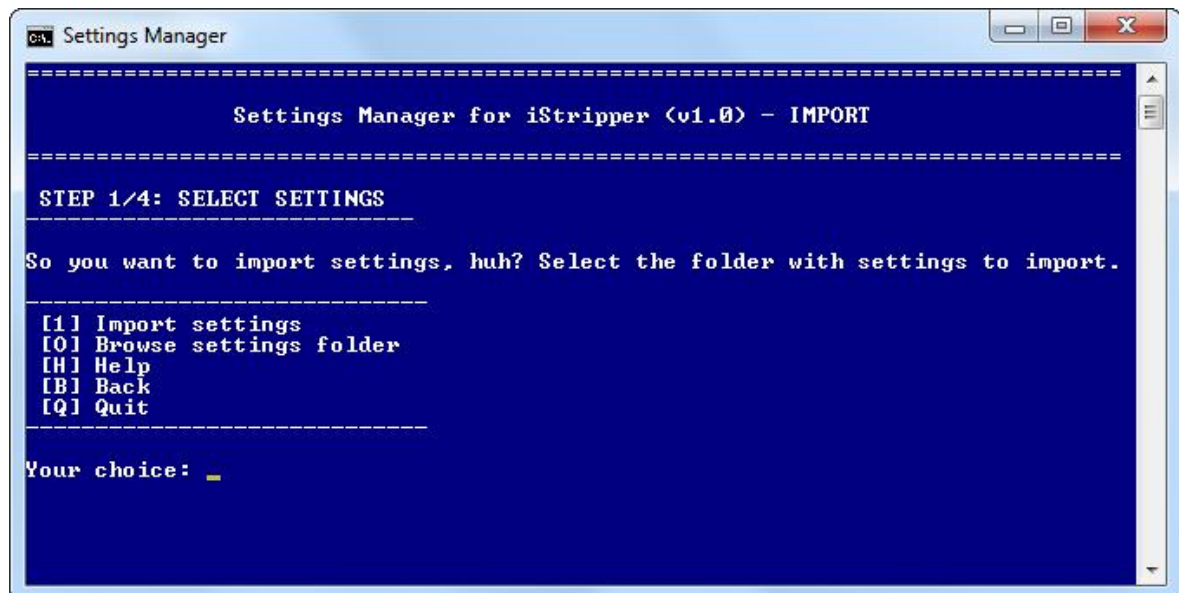
WARNING: importing settings will overwrite the current iStripper settings. Before importing the settings, consider whether you want to export the current iStripper settings first.

To start importing iStripper settings, select the second option in the main menu:

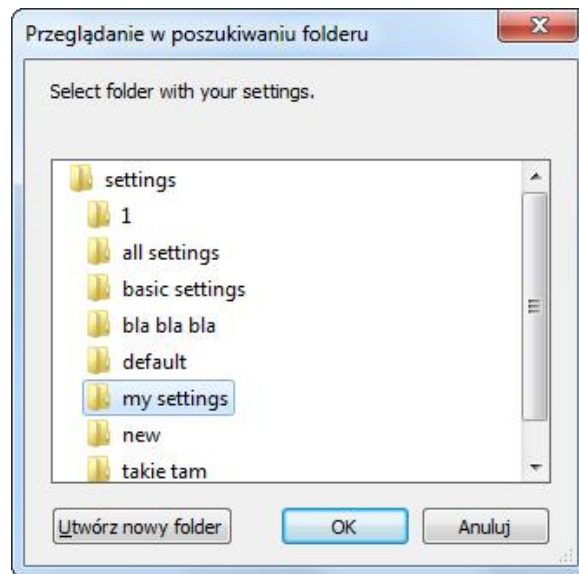
```
[2] Import settings
```

Press **[2]** on the keyboard and confirm with **[Enter]**.

6.1. Select settings to import



In the first step, select the set of settings to import. Select **[1]** (Import settings) and confirm with **[Enter]**. The folder selection window will be displayed:



Highlight the desired settings and click **OK**. The program will take you to step two.

INFO: The **[O]** (Browse settings folder) option opens a folder with all saved settings in a new window. This function can be helpful to view the available settings. However, it is not used for selecting settings to import. To select settings to import always use option **[1]** (Import settings).

6.2. Select the range of settings

In the second step, the program will ask you to choose the range of settings to import. It is possible to choose one of two ranges: **basic settings** and **all settings** (everything).

The **basic settings** include the settings available in the **Settings** tab (gear icon in the upper right corner of the iStripper window). It does not matter if the **Advanced Settings** option is enabled or not. All options available in this tab, even those hidden, will be imported.

All settings (everything) in addition to the basic settings also include:

- settings available in the **Girls Store** tab - view, sort and filter settings,
- settings available in the **My collection** tab - view, sort and filter settings,
- the state of activation/deactivation switch of the iStripper program,
- the state of the **Master sound** switch,
- settings in the **Music** tab - view settings, active songs,
- settings in the **Full screen** tab - view settings, active scenes,
- resolution of bonus videos,
- settings responsible for managing the amount of disk space for demo files.

Settings Manager is able to recognize what range of settings is saved in the selected folder. If a full range of settings is available in the selected folder, the program will allow you to choose: you can

import only basic settings (**Import basic settings**) or all settings (**Import everything**). If Settings Manager finds only the basic settings in the selected folder, the option **Import everything** will be hidden.



Select the range of settings you want to import by pressing the **[1]** key (Import basic settings) or **[2]** (Import everything), then accept with the **[Enter]** key. You will go to the next step.

INFO: you can use the **[D]** (Show description) option to display additional information about the selected set of settings. The information includes the date and time the file was created, as well as the description you gave when exporting the selected settings.

6.3. Confirm operation

The program will display a summary showing the name of the selected settings and the range of settings to import. You can still change these options by going back with the **[B]** key. If you don't want to change anything, accept your choice. Select **[1]** (Import now) and press **[Enter]**.

The import process will start. It will take a second or two. After its completion, the program will automatically take you to the last step in this process.



6.4. Save as default

Settings Manager can save the imported settings as default. In this process, a special shortcut to the iStripper program is created on the desktop. With its help you will launch the iStripper program with the default settings loaded - your default settings. If you have a standard shortcut to iStripper on your desktop, don't be afraid - it will be intact.



If you want to use the imported settings as default in the future, select **[Y]** (Yes), otherwise select **[N]** (No). Confirm the selection with the **[Enter]** key.

If you are not sure whether you want to use these settings as default, just select **[N]** (No). The default settings can be selected later, using the appropriate option in the Settings Manager main menu (its description can be found in the further part of the manual).

WARNING: Remember that launching iStripper with a special shortcut will overwrite its current settings. Before you use a special shortcut, consider exporting the current iStripper settings.

6.5. Done

The import process has been completed. You'll see a message like in the picture below:



If iStripper was running while importing the settings, you must close it and restart it. Only then will iStripper be able to read the new settings.

Return to the main menu by pressing the **[B]** (Back) key or close manager by pressing the **[Q]** (Quit) key. As always, confirm the selection with the **[Enter]** key.

7. Selecting your own default settings

Settings Manager allows you to choose your own default settings. They can be any settings from among those that were previously exported. In this process, a special shortcut to the iStripper application is created on the desktop. The shortcut automatically imports the selected settings, and then launches the iStripper application. The import of settings is invisible to the user, as it is executed in the background without any visible messages.

This process consists of three steps.

- Selection of saved settings
- Selection of the range of settings
- Confirmation of the operation

To choose your own default settings for iStripper, select the third option in the main menu:

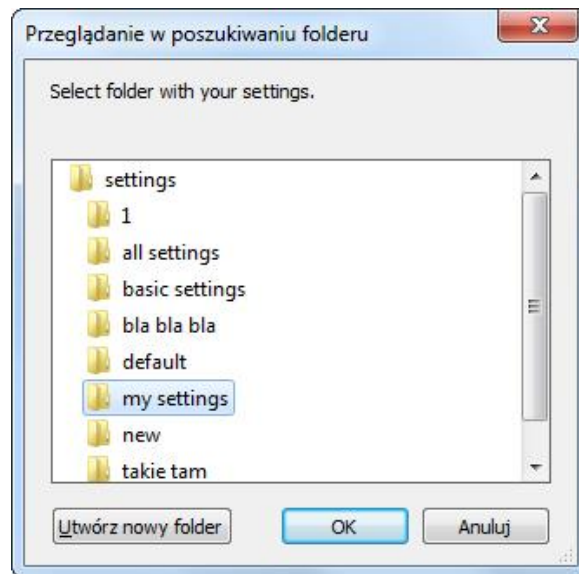
```
[3] Set default settings
```

Press **[3]** on the keyboard and confirm with **[Enter]**.

7.1. Select settings



Select the set of settings to be used as the default. Select **[1]** (Choose settings) and confirm with **[Enter]**. The folder selection window will be displayed:



Highlight the desired settings and click **OK**. The program will take you to step two.

INFO: The **[O]** (Browse settings folder) option opens a folder with all saved settings in a new window. This function can be helpful to view the available settings. However, it is not used for selecting settings to include. To select settings always use option **[1]** (Choose settings).

7.2. Select the range of settings

In the second step, the program will ask you to choose the range of settings that will be used as the default settings for iStripper. It is possible to choose one of two ranges: **basic settings** and **all settings** (everything).

The **basic settings** include the settings available in the **Settings** tab (gear icon in the upper right corner of the iStripper window). It does not matter if the **Advanced Settings** option is enabled or not. All options available in this tab, even those hidden, will be included.

All settings (everything) in addition to the basic settings also include:

- settings available in the **Girls Store** tab - view, sort and filter settings,
- settings available in the **My collection** tab - view, sort and filter settings,
- the state of activation/deactivation switch of the iStripper program,
- the state of the **Master sound** switch,
- settings in the **Music** tab - view settings, active songs,
- settings in the **Full screen** tab - view settings, active scenes,
- resolution of bonus videos,
- settings responsible for managing the amount of disk space for demo files.

Settings Manager is able to recognize what range of settings is saved in the selected folder. If a full range of settings is available in the selected folder, the program will allow you to choose: you can use only basic settings (**Include basic settings**) or all settings (**Include everything**). If Settings Manager finds only the basic settings in the selected folder, the option **Include everything** will be hidden.



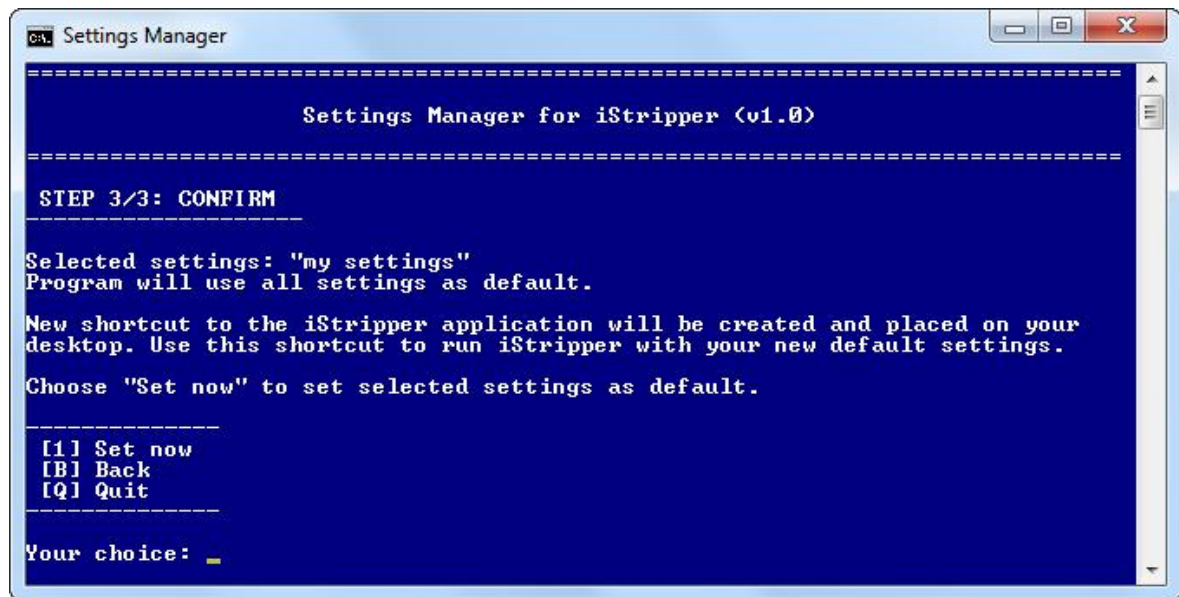
Select the range of settings that you want to use as default by pressing **[1]** (Include basic settings) or **[2]** (Include everything). Accept the selection with the **[Enter]** key.

INFO: you can use the **[D]** (Show description) option to display additional information about the selected set of settings. The information includes the date and time the file was created, as well as the description you gave when exporting the selected settings.

7.3. Confirm operation

The program will display a summary showing the name of the selected settings and the range of settings to use as default. You can still change these options by going back with the **[B]** key. If you don't want to change anything, accept your choice. Select **[1]** (Set now) and press **[Enter]**.

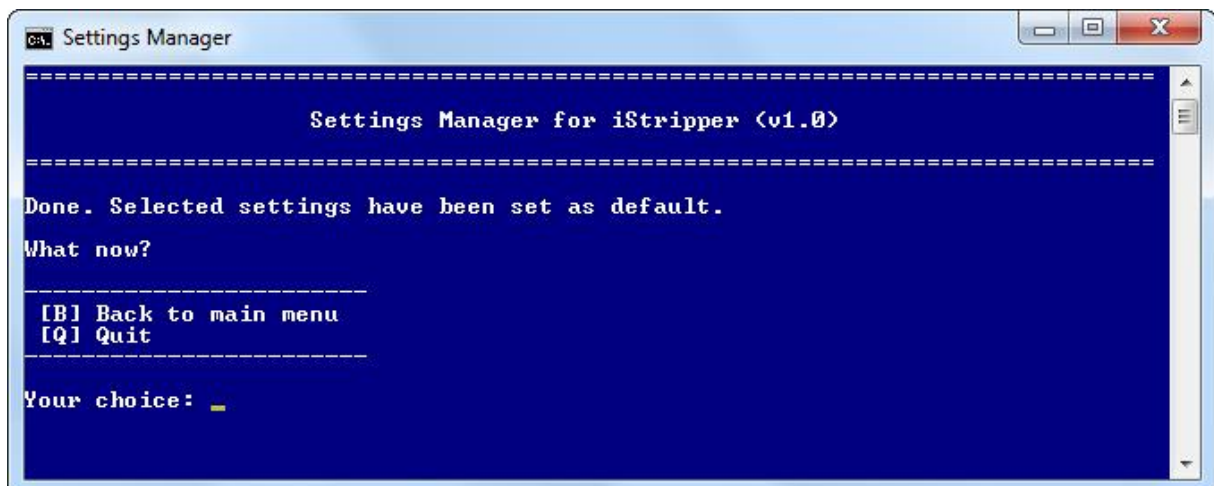
The process of saving the default settings will start, which will take a second. As a result of the operation, a text file will be created in which the name and range of the selected set of settings are saved. This file is named **default.txt** and is located in the installation directory of the Settings Manager program. There is no need to open or edit it.



In addition, a special shortcut will be created to run iStripper. It will be placed on your desktop. Each time you use this shortcut, the settings you have selected will be imported. The appearance of the shortcut is shown in the picture. If you don't want this shortcut on the desktop, you can move it to any place, such as the **Start** menu, quick launch toolbar, etc.



7.4. Done



The default settings have been saved. Return to the main menu by pressing the **[B]** (Back) key or close manager by pressing the **[Q]** (Quit) key. As always, confirm the selection with the **[Enter]** key.

8. Reset iStripper

Settings Manager allows you to quickly restore iStripper settings to the original state that occurred just after installation. In the process of resetting, all settings will be restored except the settings of active scenes and music tracks as well as paths to the **data** and **models** directories.

WARNING: After resetting the iStripper settings, the existing settings can not be restored. Therefore, consider exporting your current settings.

To reset the iStripper settings, select the fourth option in the main menu:

```
[4] Reset iStripper
```

Press **[4]** on the keyboard and confirm with **[Enter]**. You will see the message as in the picture below:



Confirm by selecting **[Y]** (Yes) or cancel by selecting **[N]** (No), then press **[Enter]** key.

If you have selected **[Y]** (Yes), Settings Manager will restore the iStripper settings to the factory settings. After the process is completed, the message shown in the figure below will be displayed. Choosing **[N]** (No) takes you to the main menu.



Return to the main menu by pressing the **[B]** (Back) key or close Settings Manager by pressing the **[Q]** (Quit) key. Confirm the selection with the **[Enter]** key.

9. Additional information

About

Settings Manager for iStripper

version: 1.2 (2018-12-09)

author: LukaszR

webpage: www.isworkshop.eu

or: www.lukasr.net/projects/istripper

If you have any suggestions, information or if you have found a bug, please let me know.

e-mail: lukaszr2017@gmail.com

Changes

v1.2 (2018.12.09)

- Update: added support for the default resolution of bonus video clips.
- Update: added support for variables controlling the amount of disk space for demo files.
- Fix: the "cmdow.exe" utility has been removed (it caused too many false positives).

v1.1 (2018.08.05)

- Update: support for sound and volume settings introduced in iStripper 1.2.204.

v1.0 (2018.04.20)

- first version.

Disclaimer

Permission is hereby granted, free of charge, to any person obtaining a copy of this software and associated documentation files (the "Software"), to deal in the Software without restriction, including without limitation the rights to use, copy, modify, merge, publish, distribute, sublicense, and/or sell copies of the Software, and to permit persons to whom the Software is furnished to do so, subject to the following conditions:

The above copyright notice and this permission notice shall be included in all copies or substantial portions of the Software.

THE SOFTWARE IS PROVIDED "AS IS", WITHOUT WARRANTY OF ANY KIND, EXPRESS OR IMPLIED, INCLUDING BUT NOT LIMITED TO THE WARRANTIES OF MERCHANTABILITY, FITNESS FOR A PARTICULAR PURPOSE AND

NONINFRINGEMENT. IN NO EVENT SHALL THE AUTHORS OR COPYRIGHT HOLDERS BE LIABLE FOR ANY CLAIM, DAMAGES OR OTHER LIABILITY, WHETHER IN AN ACTION OF CONTRACT, TORT OR OTHERWISE, ARISING FROM, OUT OF OR IN CONNECTION WITH THE SOFTWARE OR THE USE OR OTHER DEALINGS IN THE SOFTWARE.

Settings Manager for iStripper is not part of iStripper software. Totem Entertainment is not responsible for the operation or use of the Settings Manager program.